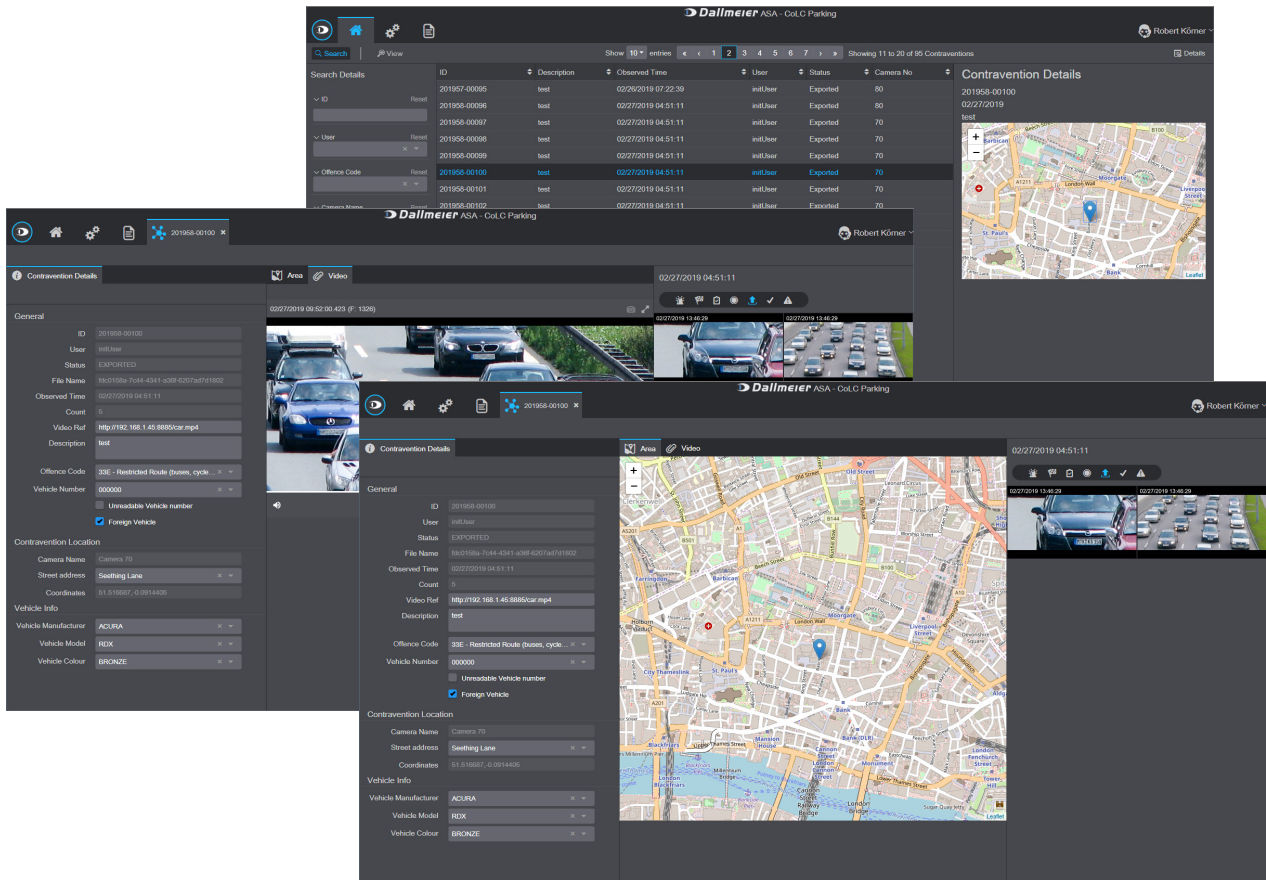


# Traffic Enforcement Module

HEMISPHERE® TEM Module for processing traffic offences recorded with the HEMISPHERE® SeMSy® Contraventions Process



## Function

The HEMISPHERE® Traffic Enforcement Module (TEM) is used to evaluate traffic or parking offences. Operators check in the module the recordings of possible offences that were previously captured with the HEMISPHERE® SeMSy® Contraventions Process on a SeMSy® Workstation.

## Overview Offences

The module first lists all recorded violations in a chronological overview. The list can be filtered and searched by ID, user, offence code, camera name, license plate, date and time, and processing status.

## Localization

The detailed view of a recorded traffic offence shows its exact location in a map section.

## Operation

In an edit mode, the operators can check the entries and decide if there has been a traffic violation that is to be reported. For this purpose, the recording of the offence and further information or snapshots from the recording are available. If an entry is not further pursued because there is obviously no violation, this must be confirmed with a predefined reason.

## Protocol

All offences that have been reported are summarized in detail in a protocol for further prosecution and review. The list can be filtered by date and exported as a PDF file.

## Configuration

The HEMISPHERE® Traffic Enforcement Module provides a graphical user interface for configuration and operation, which can be accessed platform independently with a web browser.

## Hardware

The HEMISPHERE® Traffic Enforcement Module is installed and operated on a dedicated server. The optional Server 5 Rack-Mount 2RU is recommended as hardware platform.

## Licensing

The license for the HEMISPHERE® Traffic Enforcement Module is managed on the HEMISPHERE® Site Dongle.

## Note


The adaptation of this HEMISPHERE® Traffic Enforcement Module to the current HEMISPHERE® Kubernetes platform is currently still in preparation.

# Traffic Enforcement Module

HEMISPHERE® TEM Module for processing traffic offences recorded with the HEMISPHERE® SeMSy® Contraventions Process



Module License	
007473	<b>DLD - HEMISPHERE® Traffic Enforcement Module</b> License for the use of the TEM module for the processing of traffic offences recorded with the HEMISPHERE® SeMSy® Contraventions Process, for one instance of the HEMISPHERE® Backbone Server

Server	
	<b>009077.401 Server 5 Rack-Mount 2 RU</b> Server hardware, 2 RU rack-mount, 2× 12-core 2.0 GHz CPU, 128 GB DDR5 RAM, 1× M.2 NVMe SSD 256 GB, 2× SSD 2000 GB with RAID 1 (in tray), 6× 3.5" HDDs optional, MegaRAID Controller (RAID 5/6), 2× redundant power supplies included, license for VMware ESXi 7.0 included (2× CPUs with up to 8 cores)

Dallmeier electronic GmbH & Co.KG | Bahnhofstr. 16, 93047 Regensburg, Germany | +49 941 8700-0 | dallmeier.com

All trademarks identified by \* are registered trademarks of Dallmeier electronic GmbH & Co.KG.

Third-party trademarks are named for information purposes only. Dallmeier electronic respects the intellectual property of third parties and always attempts to ensure the complete identification of third-party trademarks and indication of the respective holder of rights. In case that protected rights are not indicated separately, this circumstance is no reason to assume that the respective trademark is unprotected.

Specifications subject to change without notice. Errors and misprints excepted. Pictures may differ from the actual product.



See more.